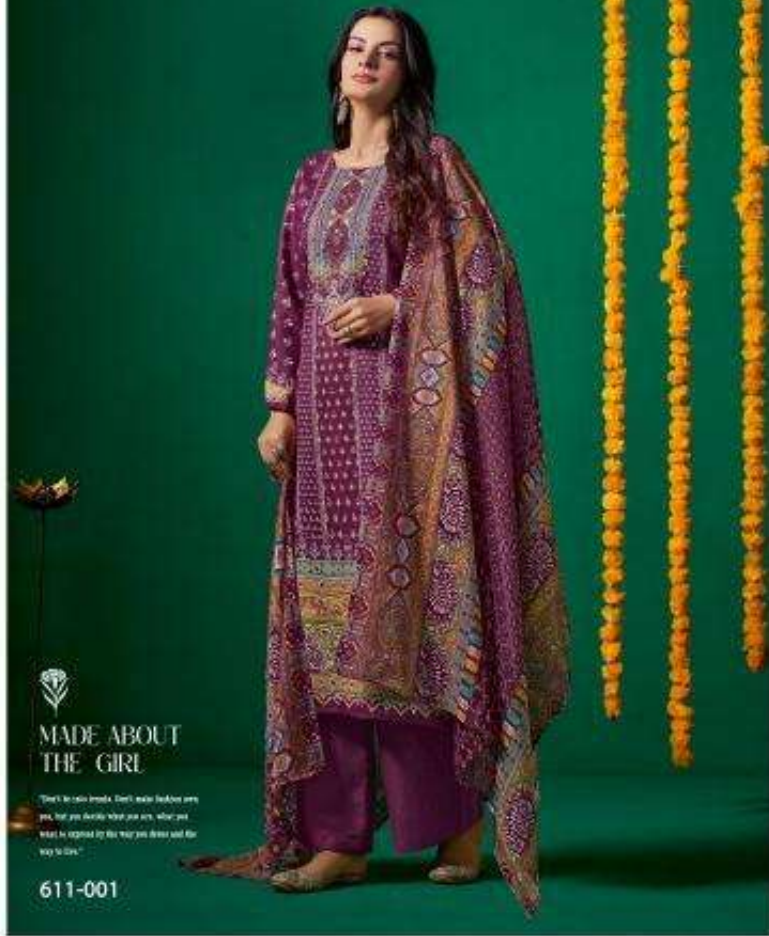


 **Zulfat**<sup>®</sup>  
Designs since 1980

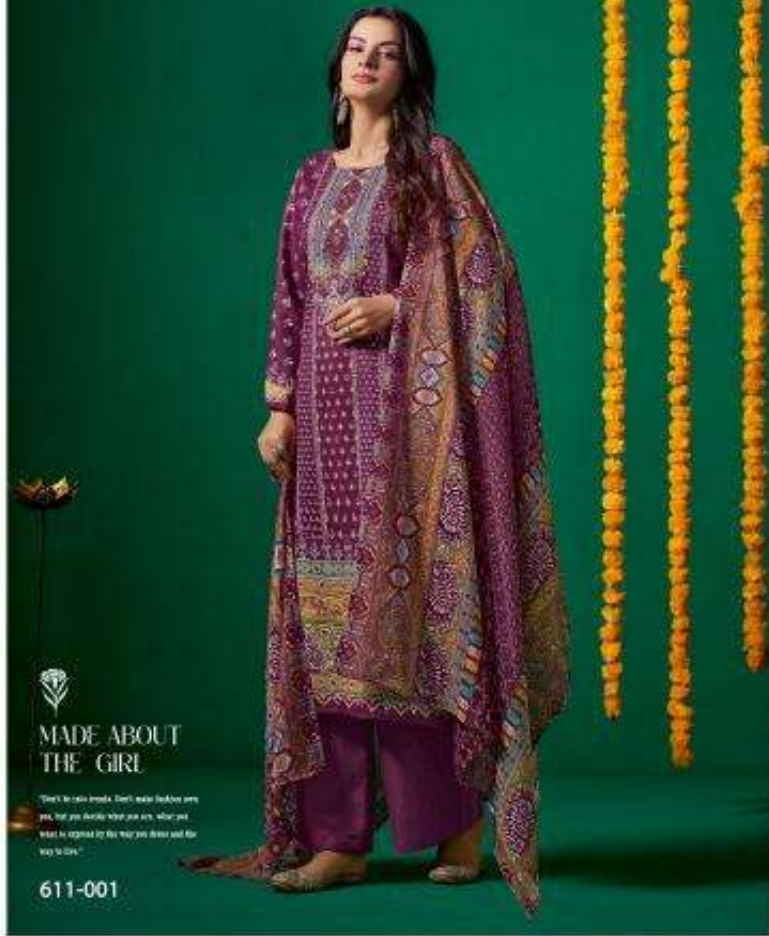


**MADE ABOUT  
THE GIRL**

"Don't be into trends. Don't make fashion your  
god, but you should know you are what you  
want to express by the way you dress and the  
way to live."

611-001

 **Zulfat**<sup>®</sup>  
Designs since 1988

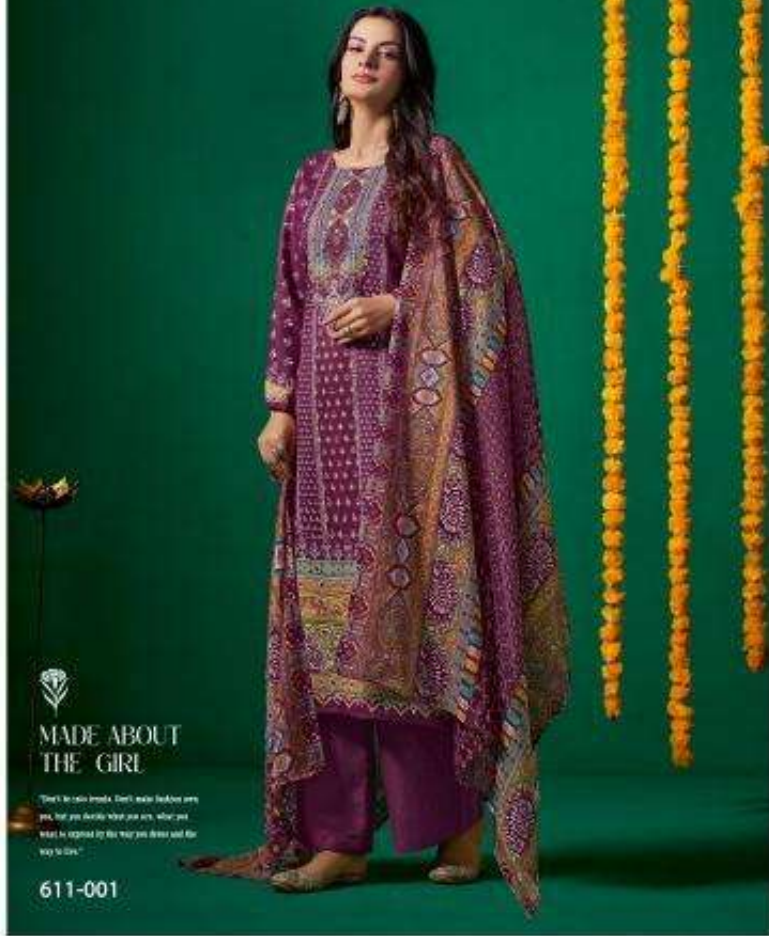


**MADE ABOUT  
THE GIRL**

"Don't be into trends. Don't make fashion your  
god, but you should know you are what you  
want to express by the way you dress and the  
way to live."

611-001

 **Zulfat**<sup>®</sup>  
Designs since 1988



**MADE ABOUT  
THE GIRL**

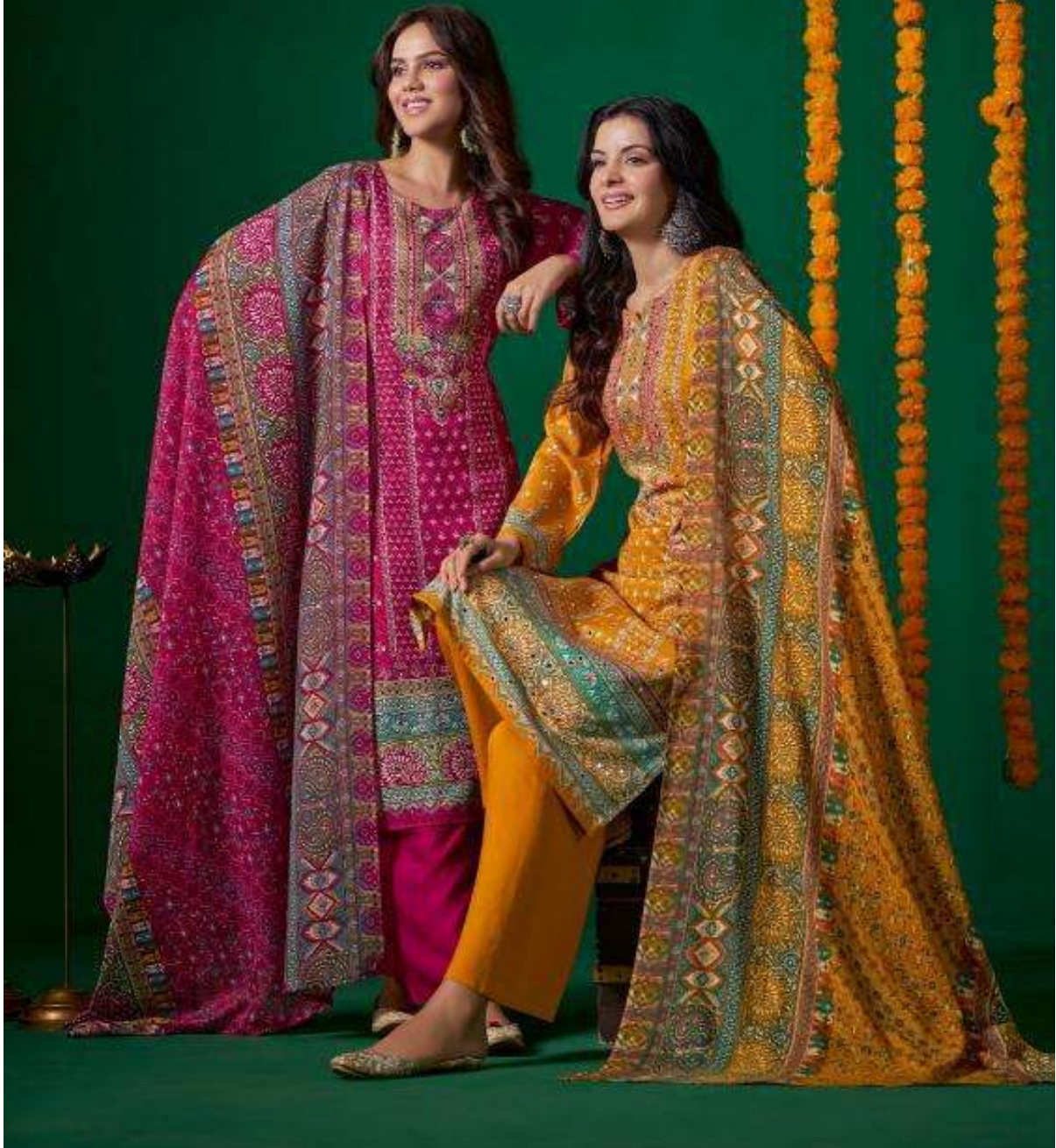
"Don't be into trends. Don't make fashion your  
god, but you should know you are what you  
want to express by the way you dress and the  
way to live."

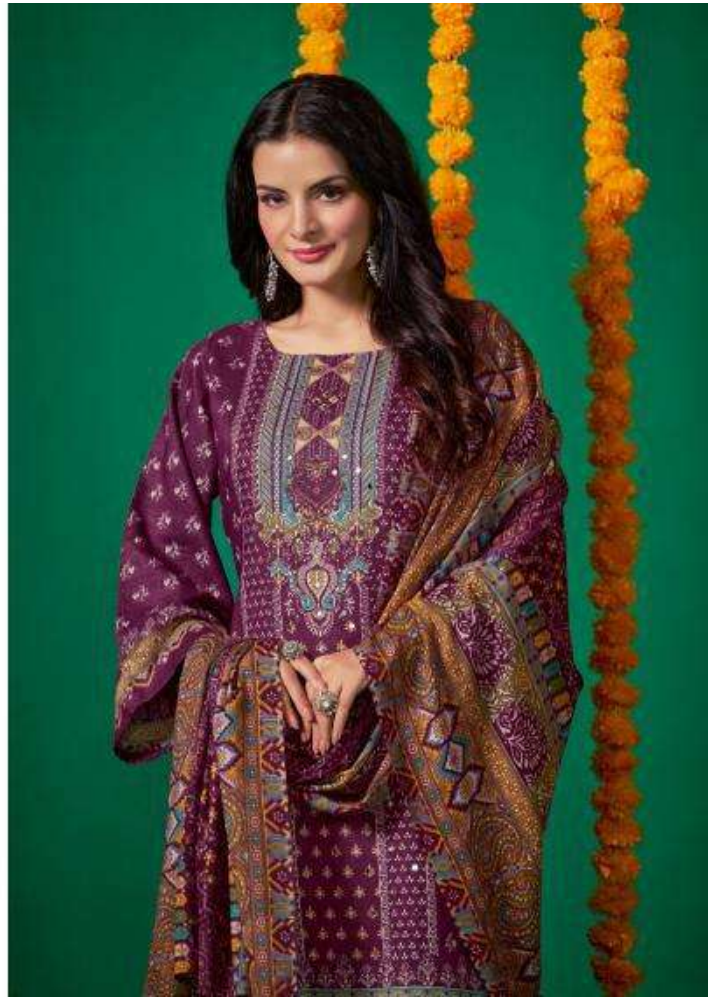
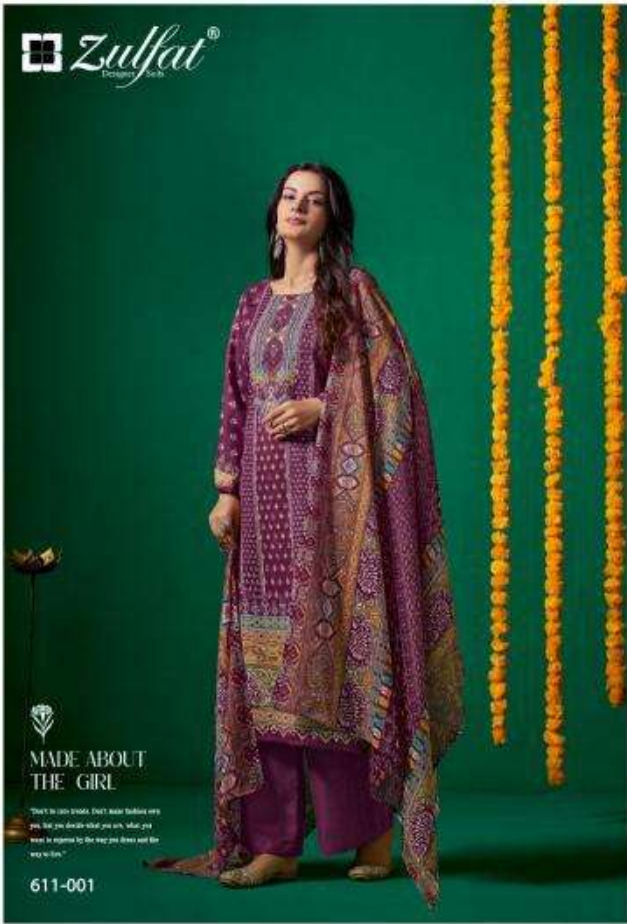
611-001

 *Zulfat*<sup>®</sup>  
Designer Suits

# TISHA

VOL-02







*Zulfat*<sup>®</sup>  
DESIGNER BRAND

TISHA  
VOL-02

"What you have to love in yourself, you will do for others, especially  
when those others are in pain. Patience is a great language."



Zuffat®  
Dresses and Suits

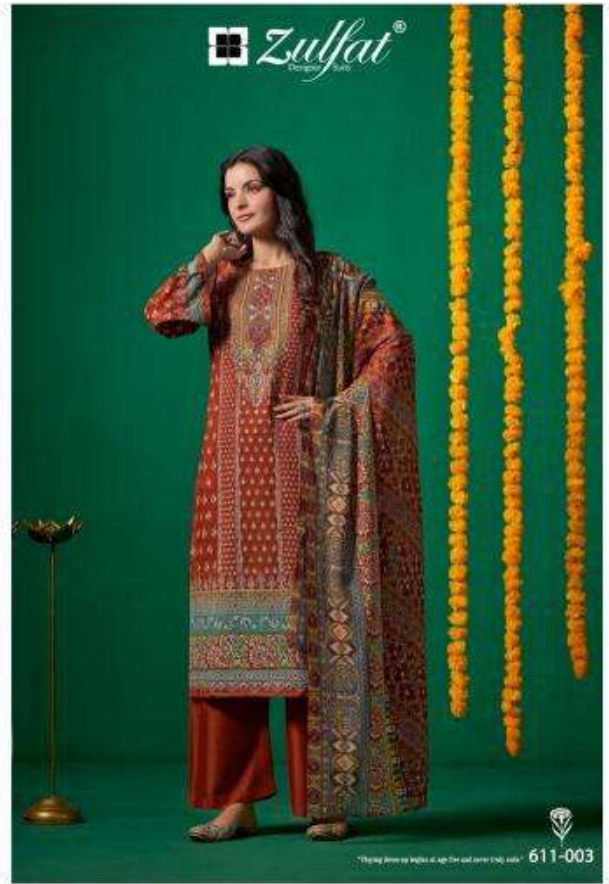
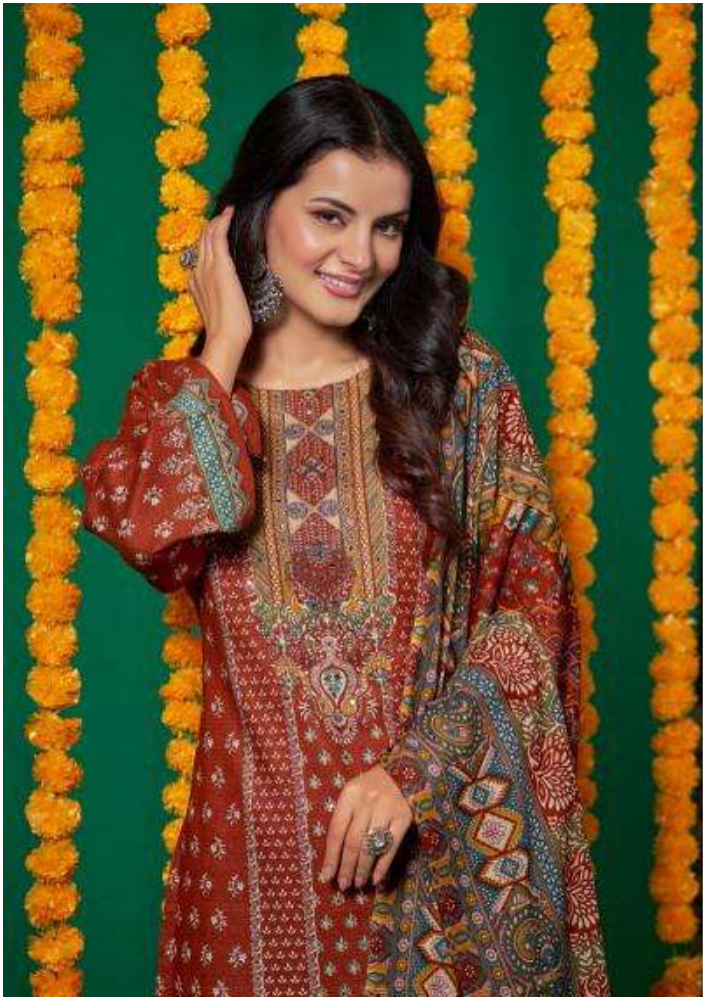


"Fashion is what you're allowed to wear a coat  
of diamonds. And style is what you choose."



611-002







TREASURIAL LOOKS



611-004 \*This look may fit for you please contact to the artist, your body shape.  
\*This fabric pattern is available. Pakistan is better. Bangladesh

Zulfat®  
DESIGNER



 **Zuffat**<sup>®</sup>  
Designs Since  
**TISHA**  
VOL-02

"What you wear is how you present yourself to the world, respond!  
TISHA, when it comes to the gold, Tuffness is the real message."



DIFFERENT STYLE



611-005

"You see something, want it all the time. Feel things but not you. This is how you look sometimes!"



**611-001**



**611-002**



**611-003**



**611-004**



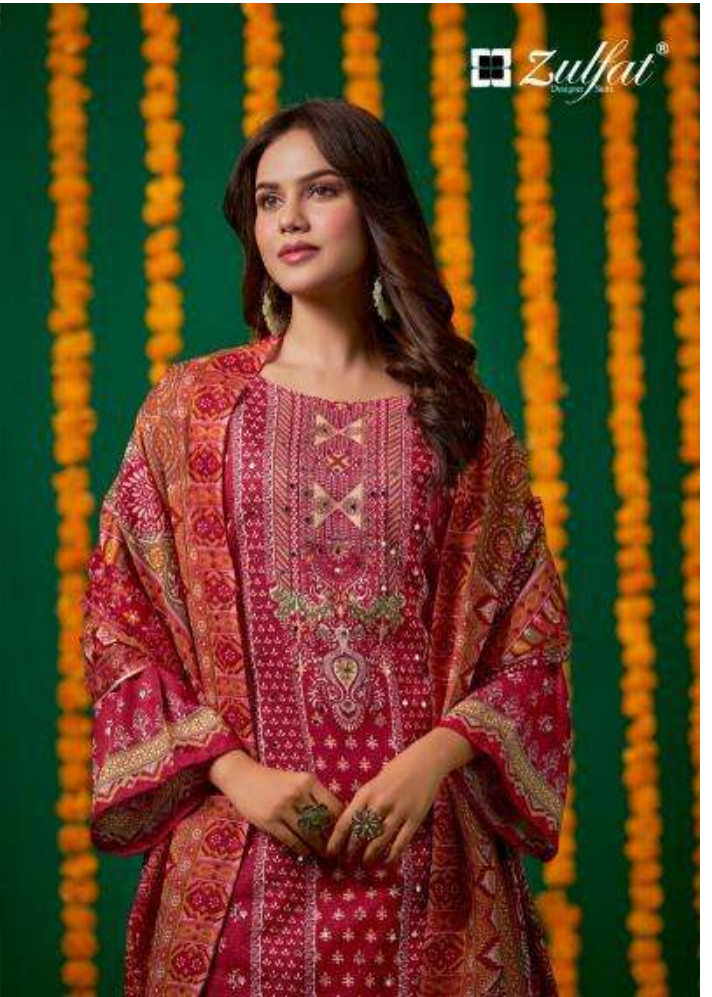
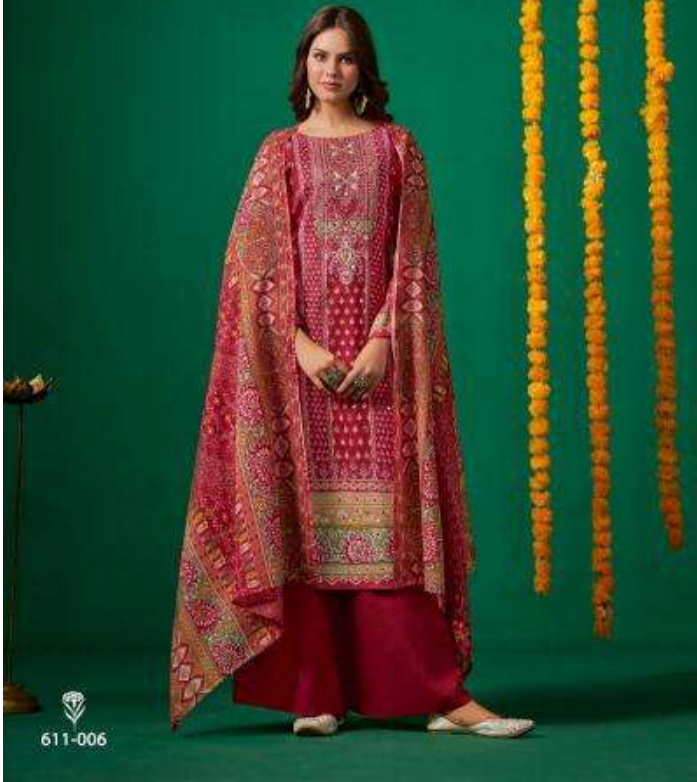
**611-005**



**611-006**

FABRIC  
FORM &  
FUNCTION

Zulfat®  
Pakistani Fashion



611-006