

# Imprisonment

*Fashion should be a form of escapism, and not a form of imprisonment*



1124  
MEHENDI



1121  
MAROON



1122  
RAMA



1123  
WINE



1124  
MEHENDI



# Imprisonment

*Fashion should be a form of escape, not a form of imprisonment*





# Imprisonment

*Fashion should be a form of escapism, and not a form of imprisonment*



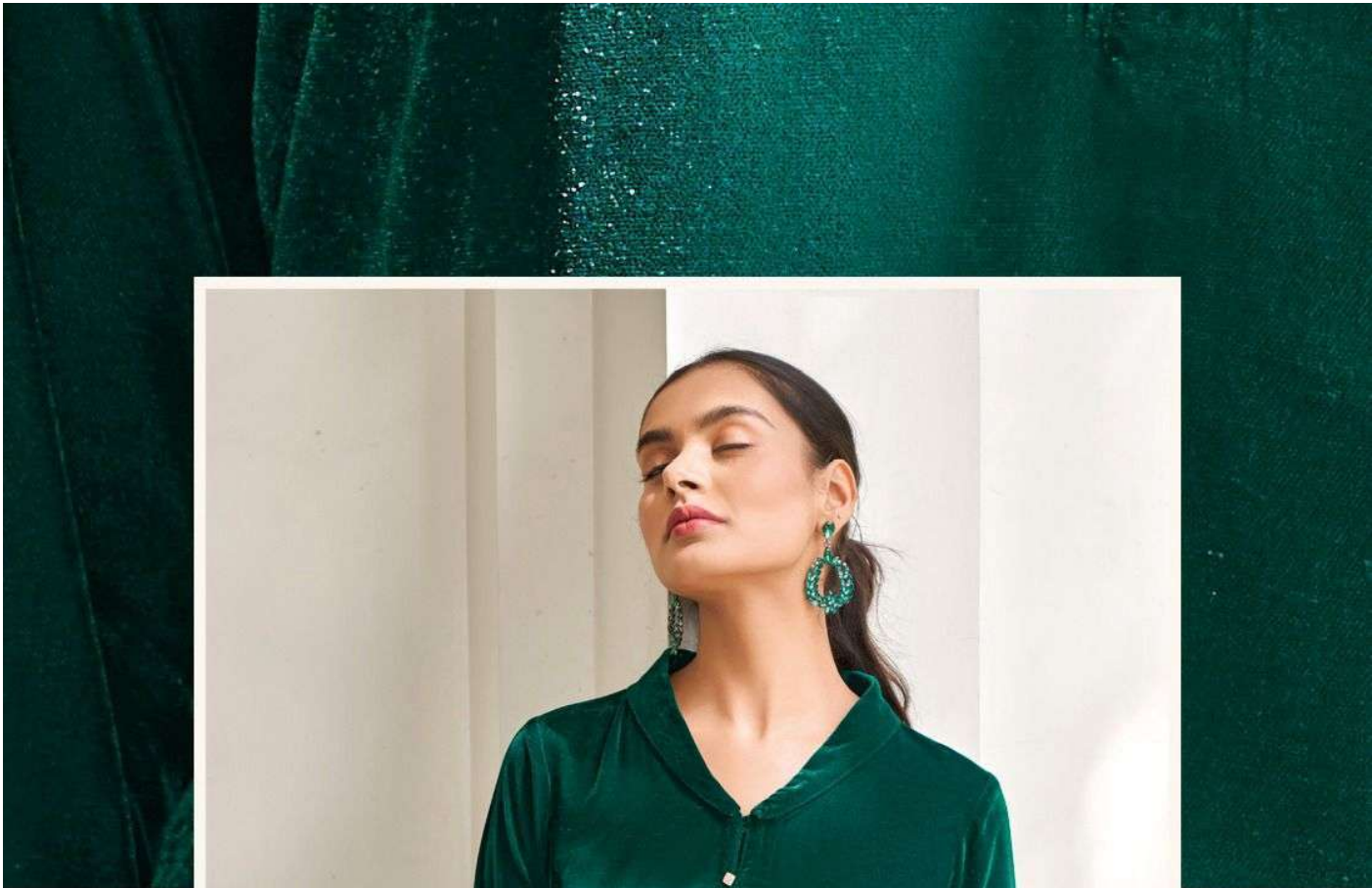
1124  
MEHENDI







1123  
WINE





*Style is a way to say who you are without having to speak*

# Style to way



**1122**  
RAMA





