













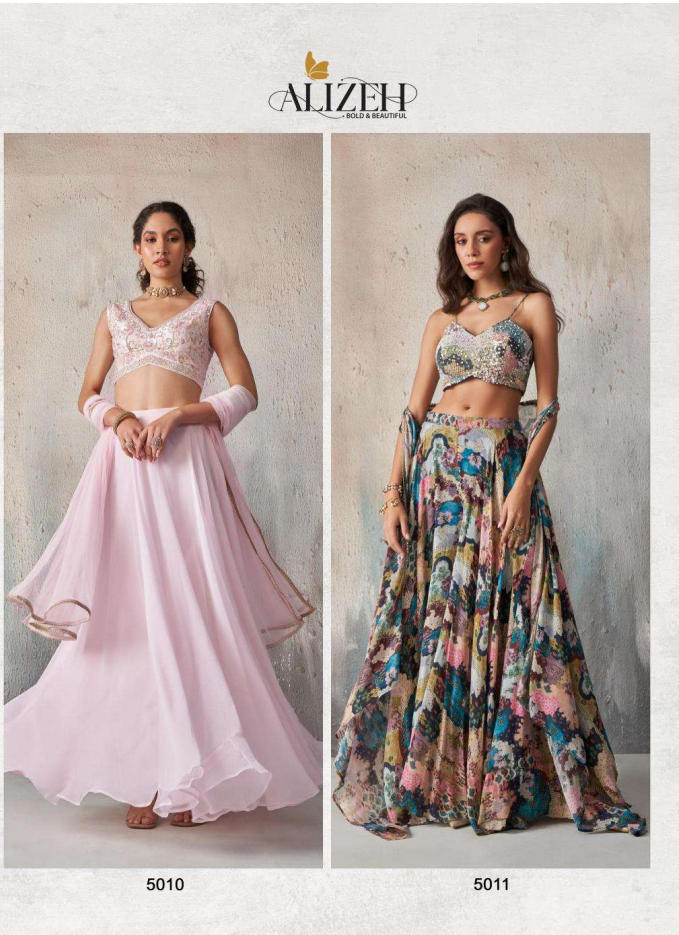


**ALIZEH**  
BOLD & BEAUTIFUL

**Universal Grace**  
Her gait knows no boundaries. Her elegance knows no limits. Her charm is a source of inspiration and wonderment across the world. Looking simply divine in her matchless attire, she rules the world with her smile. Her admirers follow, entranced.

5011







5010



**A pricelessst**  
Of all the things in heaven and earth that man holds close to his heart, when you look as you do in these threads...he holds nothing dearer. Be above the rest.

 **ALIZEH**  
BOLD & BEAUTIFUL





## READYMADE - 2

D. NO	Fabric	Color
5010	GEORGETTE	LIGHT PINK
5011	CHINON	PRINTED BLUE

### FABRIC DESCRIPTION:

INNER & BOTTOM – SANTOON/AMERICAN, DUPATTA/CAPE – SOFT NET/CHINON

### WORK DESCRIPTION:

BLOUSE - PURE KHATLI WORK WITH SEQUINS, MOTI, CUTDANA, RESHAM

### SIZE DETAILS:

#### TWO SIZES

1. 36 INCHES BUST, 30-32 INCHES WAIST,
2. 40 INCHES BUST, 34-36 INCHES WAIST

(2 INCHES MARGIN AVAILABLE)

1. CHOLI LENGTH – 14-15 INCHES
2. LEHENG/SHARARA LENGTH – 40-42 INCHES