







PASSION TREE  
A Window Of Fashioning Creativity

# MINARAVA

Vol - 02



2001

2002

2003

2004



2005

2006

2007

2008

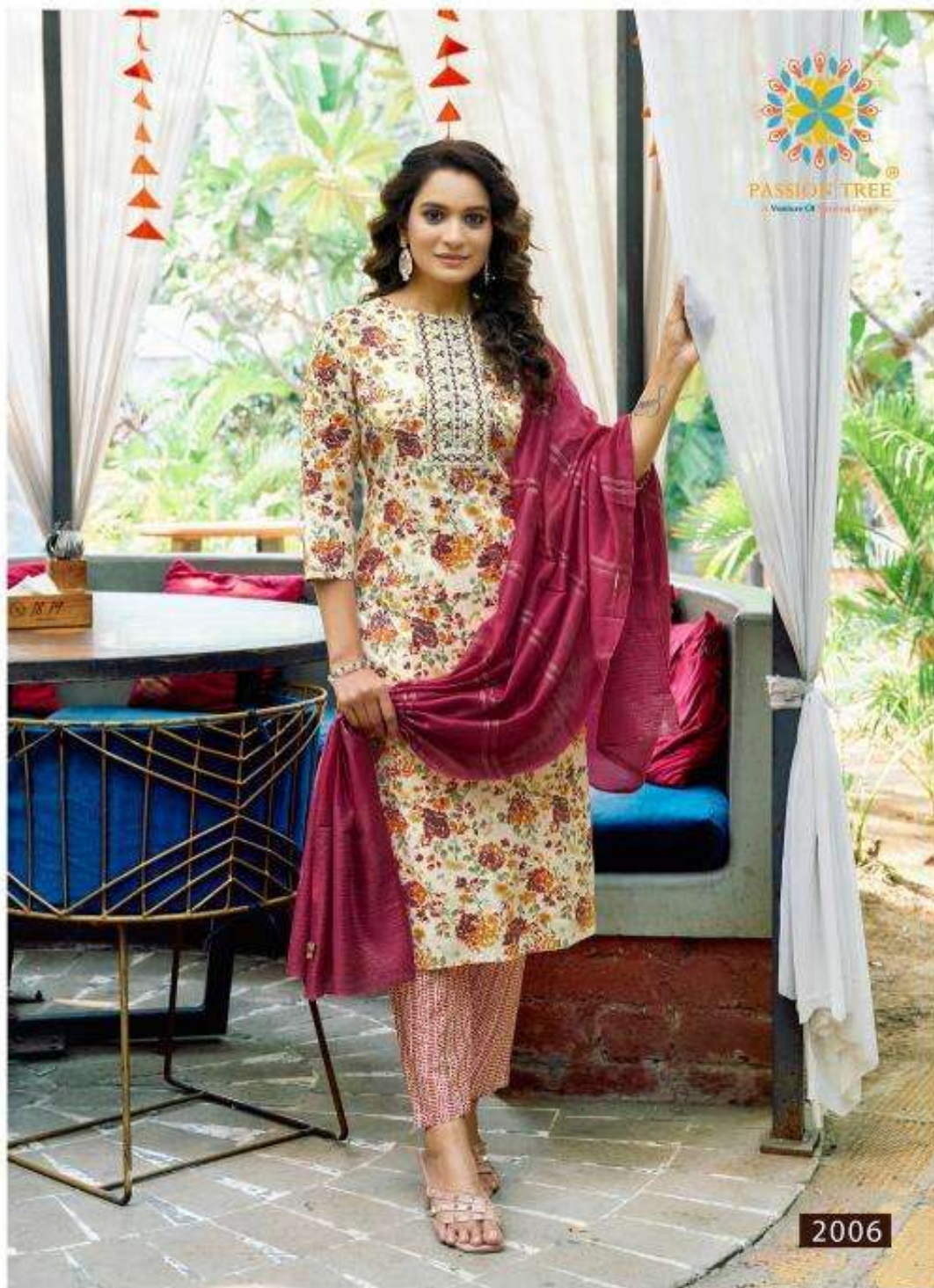
2009



2009








  
**PASSION TREE**  
A Walkway Of Colors & Laughter

2006




  
**PASSION TREE**  
A Passion Of Versatility

2004





  
**PASSION TREE**  
A Passion for Fashion

2005



PASSION TREE  
A Division Of Varma Group



2002



PASSION TEE  
A Window Of Fashion

2003



PASSION TREE®  
A WOMEN OF FASHION STORE



2001



PASSION COLORS  
A Venture Of VISION

Season's  
**MOST**

Sparkling  
Glamorous  
Stylish  
Just Like You

FOR  
FASHION

It is a beautiful collection of kurtis and shawls. The kurtis are made of soft fabric and are available in various colors and designs. The shawls are made of light fabric and are available in various colors and designs. This collection is perfect for the season.

# MINARAVA

Vol - 02

**KURTI**  
Designer

