

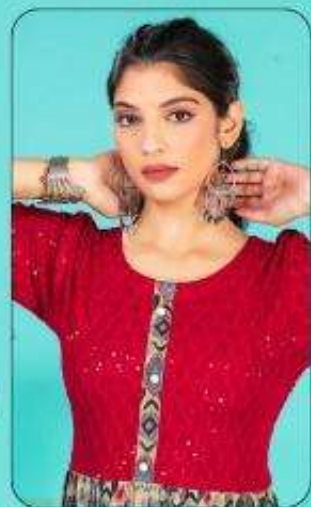
DEE CEE®  
— The Fashion Capital —  
STREE



DEE CEE®  
— The Fashion Empire —  
STREE



DEE CEE  
— The Fashion Capital —  
STREE



"FASHION THAT  
MAKES HEARTS  
MELT."

DEE CEE®  
— The Fashion Capital —  
STREE



DEE CEE®  
— The Fashion Capital —  
STREE



DEE CEE®  
— The Fashion Capital —  
STREE



*"BE CUTE. BE FASHIONABLE."*





FAB:- CAPSULE PRINT WITH CHICKEN FABRIC.  
PATTERN:- FLARED LONG KURTI WITH BUTTON ON BUTTON PATTI.  
SEQUINS CHICKEN FABRIC CHOLI WITH 3/4 SLEEVE.  
SEQUINS CHICKEN BORDER ON DAMAN FRONT SIDE.

**DEE CEE**  
The Fashion Empire

LENTH:- 46"  
GHERA :- 40"  
SIZE:- L, XL, XXL, 3XL, 4XL

**STREE**  
THE FASHION EMPIRE



DEE CEE®  
— The Fashion Capital —  
STREE

